

# O3-02 NEW RETRIEVAL APPROACH TO TROPOSPHERIC NO<sub>2</sub> BY SYNERGISTIC INVERSION OF SATELLITE NADIR DOAS SOUNDINGS AND GROUND-BASED FTIR MEASUREMENTS

R. Sussmann<sup>1</sup>, W. Stremme<sup>1</sup>, J.P. Burrows<sup>2</sup>, A. Richter<sup>2</sup>, W. Seiler<sup>1</sup>, and M. Rettinger<sup>1</sup>

<sup>1</sup>Forschungszentrum Karlsruhe, IMK-IFU, Garmisch-Partenkirchen, Germany

<sup>2</sup>Universität Bremen, Institut für Umweltphysik

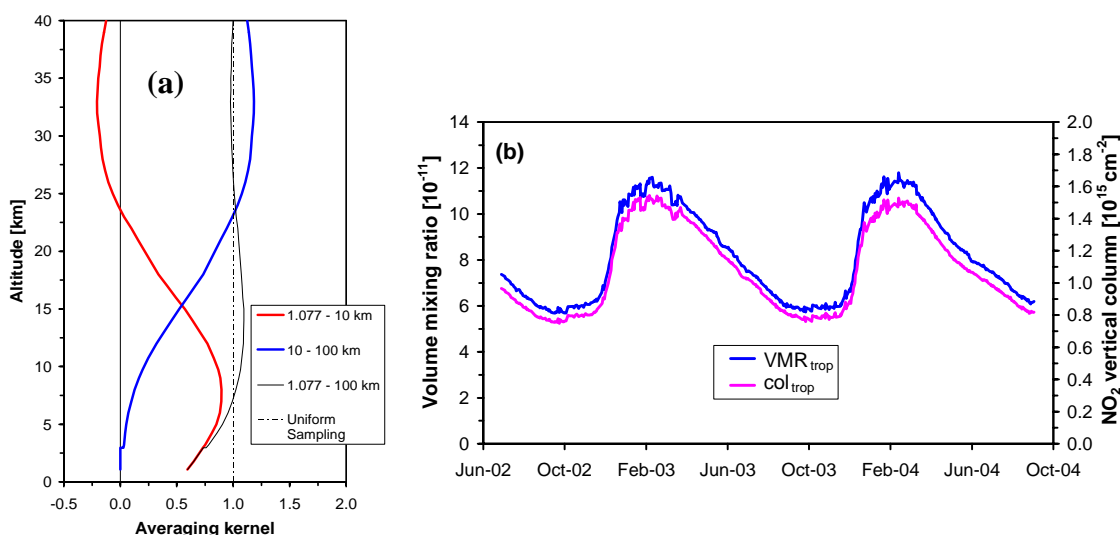
+49 8821 183 159, Ralf.Sussmann@imk.fzk.de

Ground-based FTIR is a highly accurate measure for the pure stratospheric column of NO<sub>2</sub>, and can thus be used synergistically with satellite NADIR DOAS soundings to complement the reference sector method for global tropospheric NO<sub>2</sub> retrievals.

Columnar NO<sub>2</sub> from FTIR measurements at the Zugspitze (47.42 °N, 10.98 °E, 2964 m asl.) were used synergistically with SCIAMACHY satellite data (Univ. Bremen algorithm UB1.5). A new concept to match FTIR data to the time of satellite overpass makes use of the NO<sub>2</sub> daytime increasing rate retrieved from the FTIR data set itself [ $+1.02(6)E+14$  cm<sup>-2</sup>/h]. SCIAMACHY data within a 200-km selection radius around Zugspitze were considered, and a pollution-clearing scheme was developed to select only pixels corresponding to clean background (free) tropospheric conditions. Analysis of the averaging kernels gives proof that a high-mountain-site FTIR is a highly accurate measure for the stratospheric column, while SCIAMACHY shows significant tropospheric sensitivity. Based on this, we set up a combined FTIR-SCIAMACHY retrieval for NO<sub>2</sub> which delivers two independent pieces of information for troposphere and stratosphere, respectively (Fig. 1a). It yields an annual cycle of the background (free) tropospheric column between 0.75-1.54E+15 cm<sup>-2</sup>, and an intermediate phase between that known for boundary layer and stratosphere, respectively (Fig. 1b).

## References

Sussmann, R., et al., Atmos. Chem. Phys., 5, 2657–2677, 2005



**Fig. 1: (a) Averaging kernels for the combined FTIR/SCIAMACHY retrieval. Red: Trop. column (1.077 – 10 km) kernel. Blue: Strat. kernel (10 - 100 km). Black: total col. kernel. (b) Time series of the background trop. col. (1.077 km – 10 km, magenta), and trop. VMR<sub>trop</sub> (blue).**